

Certificate of Analysis

Product:	11F10 anti Ara h 2 IgE mAb
Product Code:	E-11F10
Lot Number:	xxxxx
Antibody Clone:	11F10-IgE
Origin:	Monoclonal antibody derived from a patient allergic to peanut.
Specificity:	Ara h 2 (<i>Arachis hypogaea</i> allergen).
Total IgE Concentration:	50,000 IU/mL (+/- 20%) based on ImmunoCAP using WHO International Standard for Immunoglobulin E (IgE) (NIBSC code 11/234).
Quantity:	10,000 IU in 0.2mL (1.0 IU = ~2.4ng IgE)
Formulation:	In phosphate buffered saline, pH 7.4 and 0.05% Tween-20. 0.22µm filtered, preservative free.
Specific IgE Concentration:	28,540 IU/mL based on ImmunoCAP using recombinant Ara h 2 (product code: F423)
Storage/Handling:	Maintain at -20°C for up to 12 months. Avoid repeated freeze-thaw cycles. Store product undiluted. No stability data available.

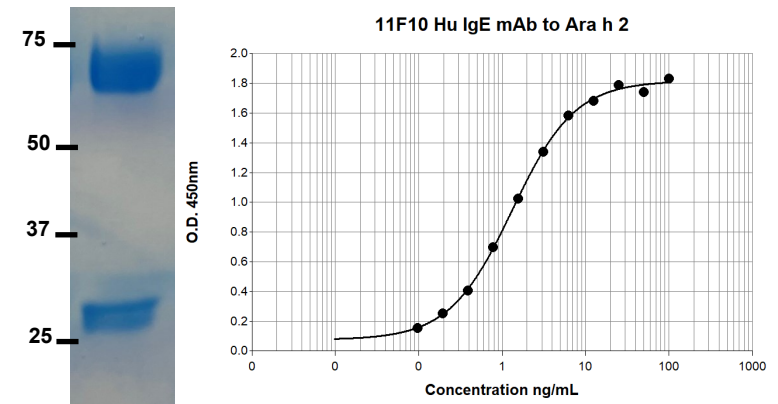
Applications include:

- QC and validation of purified allergens for molecular diagnostics
- *In vitro* IgE diagnostic tests, calibrators, controls, alternatives to human sera
- Molecular reference standards for IgE
- Epitope analysis and localization of IgE epitopes
- Mast cell/basophil activation assays and histamine release
- Animal models of anaphylaxis

For research or *in vitro* diagnostic use only:
Not for human *in vivo* or therapeutic use

An InBio® product. Made in the USA

11F10 Human IgE mAb to Ara h 2 Purity and Titration Curve



Reference

Khatri K. et. al., Human IgE monoclonal antibody recognition of mite allergen Der p 2 defines structural basis of an epitope for IgE cross-linking and anaphylaxis *in vivo*, *PNAS Nexus*, 2022; 0:1-0.

Wurth, M.A. et al., Human IgE mAbs define variability in commercial *Aspergillus* extract allergen composition, *JCI Insight*. 2018;3 (20):e123387.

Bazara, M. and Hamburger, R.N., Standardization and stability of immunoglobulin E, *J Allergy Clin Immunol* 1972; 49:189-191. PMID 4622102.

700 Harris Street · Charlottesville, VA 22903 · US · (434) 984 2304 · mail@inbio.com
Vision Court · Caxton Place · Cardiff, Wales CF238HA · UK · +44 (0) 29 21 674640 · info@inbio.com

www.inbio.com