

Assay Performance Characteristics:

Standard range: 100-0.2ng/mL
 Limit of Detection: 0.78ng/mL
 Background: OD<0.1 at 450nm
 Coefficient of Determination: R-squared>0.98

Plate Template:

	1	2	3	4	5	6	7	8	9	10	11	12
A												
B												
C												
D												
E												
F												
G												
H												

References:

- Pollart SM, Smith TF, Morris E, Gelber LE, Platts-Mills TAE, Chapman MD. Environmental exposure to cockroach allergens: analysis with monoclonal antibody based enzyme immunoassays. J Allergy Clin Immunol 87:505-510, 1991.
- Gelber LE, Seltzer LH, Bouzoukis JK, Pollart SM, Chapman MD, Platts-Mills TAE. Sensitization and exposure to indoor allergens as risk factors for asthma among patients presenting to hospital. Amer Rev Respir Dis 147:573-578, 1993.



Indoor Biotechnologies, Inc.
 700 Harris Street,
 Charlottesville, VA 22903
 United States


Indoor Biotechnologies Ltd.
 Vision Court
 Caxton Place
 Cardiff, Wales CF23 8HA
 United Kingdom

Indoor Biotechnologies,
 India Private Limited
 Bangalore Bioinnovation Centre,
 BioTech Park, Electronic City Phase 1
 Bangalore-560100, India

Tel: (434) 984-2304
 Fax: (434) 984-2709
 Email: mail@inbio.com

Tel: +44 (0) 29 2167 4640
 Email: Info@indoorbiotech.co.uk

Tel: +91-9901722009
 Email: info@inbioindia.com

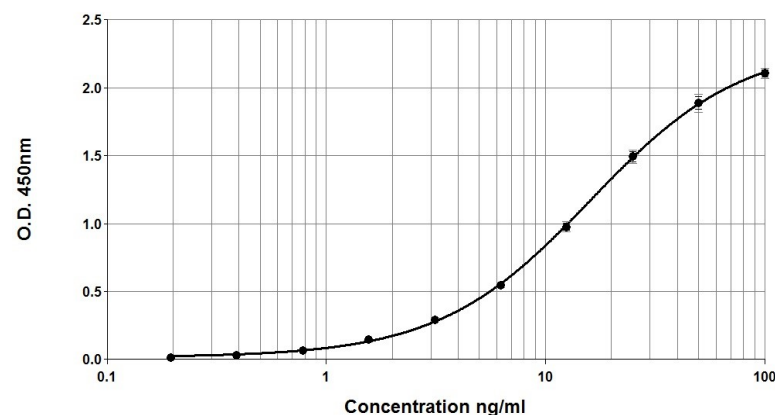
INDOOR and  are Registered Trademarks of INDOOR Biotechnologies, Ltd., Manchester U.K.



Bla g 1 ELISA 2.0 Pre-coated Plate Kit

Product Code: EPC-BG1-X
 Lot Number: xxxxx

Sample curve:



Contents:

Microtiter plate coated with anti-Bla g 1 monoclonal antibody 10A6

Bla g 1 allergen standard (white cap)
 Concentration: 1,000ng/mL

Rabbit anti Bla g 1 polyclonal antiserum (brown cap)

Peroxidase-conjugated Goat Anti-Rabbit IgG (blue cap)

Wash buffer (10x concentrate)
 Assay buffer (10x concentrate)
 TMB developing substrate
 Stop solution (0.5N sulfuric acid)

Store kit at 2-8°C
 Expiry:

**For research and commercial use in vitro: not for
 human in vivo or therapeutic use.**

An InBio™ product

Certificate of Analysis

Pre-coated Plate: 96-well polystyrene microtiter plate coated with monoclonal antibody 10A6 and treated with stabilizing agent. Sealed in foil pouch with desiccant.

Monoclonal Antibody: 10A6 (clone 10A6 F5 E1)
Immunogen: Bla g 1
Isotype: Mouse IgG1
Specificity: Binds to an epitope on cockroach *Blattella germanica* allergen, Bla g 1 and *Periplaneta americana* allergen, Per a 1.

Purification: Produced in ascites and purified by ammonium sulphate precipitation and HPLC using recombinant Protein G. Single heavy and light chain bands on SDS-PAGE.

Lot Number: xxxxx

Detection Antibody: Rabbit polyclonal antiserum

Immunogen: Recombinant Bla g 1
Isotype: Multiple
Specificity: The antiserum contains IgG antibodies to cockroach *Blattella germanica* allergen, Bla g 1 and does not react with Bla g 2.

Activity: Titrated for use in ELISA at 1/1000 dilution. Prepared in 1% BSA/50% glycerol/PBS, pH 7.4, 0.22 µm filtered, preservative free.

Lot Number: xxxxx

Allergen Standard: Purified recombinant Bla g 1 prepared in 1% BSA/50% glycerol/PBS, pH 7.4.

Concentration: 1,000ng/mL (based on amino acid analysis)
Lot Number: xxxxx

Materials required, but not provided:

- Type I ultrapure water or 18.2MΩ de-ionized water
- Volumetric measuring equipment (e.g. serological pipettes, graduated cylinders)
- Clean containers for buffer and reagent preparation
- Calibrated single and multi-channel micropipettes and tips
- Vortex mixer
- Plate reader capable of reading absorbance at 450nm
- Analysis software (recommended, but not required)

A list of frequently asked questions and troubleshooting guide can be found under the 'Support' tab on our web site: www.inbio.com.

Protocol

Please read the entire protocol before starting the assay

Bring all reagents to room temperature before use

1. Prepare a 1x dilution of wash and assay buffers from the 10x concentrates in clean containers using 18.2MΩ de-ionized water or Type I ultrapure water.
For one plate:
Wash buffer: add 15mL concentrate to 135mL water (150mL total volume)
Assay buffer: add 3mL concentrate to 27mL water (30mL total volume)
Adjust volumes accordingly for multi-plate assays. Diluted buffers may be stored at 4°C for up to 1 week.
The example below is for testing 6 samples starting at 1/10 dilution. A multichannel pipet is recommended for mixing and transferring between wells.
 - *Highly concentrated samples will require pre-dilution before adding to the plate.*
2. Remove the plate from the foil pouch. Add 150µL wash buffer to each well. Empty the wells by inverting the plate and then tap on absorbent paper to remove residual buffer. Repeat the wash cycle two times.
*Move directly to the next step to prevent the wells from drying.
3. Add 100µL assay buffer to all wells. Add an additional 80µL of assay buffer to wells A1-H1 (the total volume of assay buffer in these wells will be 180µL; all other wells will have 100µL).
4. **Standard:** gently vortex the Bla g 1 standard and add 20µL to wells A1 and B1. Mix by pipetting up and down 8-10 times, and then transfer 100µL into wells A2 and B2. Mix and continue the doubling dilution scheme across the plate to wells A10 and B10. Remove and discard 100µL from wells A10 and B10 (100µL will remain). The assay buffer in wells A11, B11 and A12, B12 will serve as **Blanks**.
Samples: add 20µL of sample to wells C1-H1. Mix by pipetting up and down 8-10 times. Transfer 100µL to wells C2-H2. Continue mixing and transferring to column 12. Remove and discard 100µL from wells C12-H12 (100µL will remain). When finished preparing the plate, the final volume in all wells should be 100µL.
5. Cover the plate and incubate for 1 hour ± 10 minutes at room temperature (20-25°C) away from direct sunlight. **Note:** gentle agitation on a plate shaker during incubations may reduce variability.
6. Gently vortex the polyclonal detection antibody and prepare a 1:1,000 detection antibody and conjugate mix by adding 11µL polyclonal antibody and 11µL peroxidase-conjugated goat anti-rabbit to 11mL assay buffer in a reagent reservoir.
Mix thoroughly. Wash the plate 3x with 150µL wash buffer per well. Add 100µL of the detection antibody/conjugate mix to each well.
7. Incubate the plate for 1 hour ± 10 minutes at room temperature (20-25°C) away from direct sunlight.
8. Pour the TMB substrate and stop solution into separate reagent reservoirs so they are ready to use in Step 9. Wash the plate 3x with 150µL wash buffer per well.
9. Use a **multi-channel** pipette to add 100µL TMB to each well and monitor the reaction as the blue color develops. Once OD450 reaches 0.08-0.09 for Standard 1, use a **multi-channel** pipette to add 50µL stop solution to each well (the color will change to yellow).
10. Gently tap the plate to ensure homogeneity and measure the absorbance at 450nm within 30 minutes. The OD for Standard 1 should be between 1.2 and 3.5.