

## Certificate of Analysis

**Product:** 2F5 anti Ana o 3 Human IgE Monoclonal Ab  
**Product Code:** E-2F5  
**Lot Number:** XXXXX  
**Antibody Clone:** 2F5-IgE  
**Origin:** Monoclonal antibody derived from a patient allergic to cashew.  
**Specificity:** Ana o 3, *Anacardium occidentale* allergen  
**IgE Concentration:** 50,000 IU/mL based on ImmunoCAP using WHO International Standard Immunoglobulin E (IgE), human serum (NIBSC code 11/234).  
**Quantity:** 10,000 IU in 0.2mL (1.0 IU = ~2.4ng IgE)  
**Formulation:** In phosphate buffered saline, pH 7.4 and 0.05% Tween-20. 0.22µm filtered, preservative free.  
**Storage/Handling:** Maintain at -20°C for up to 12 months. Avoid repeated freeze-thaw cycles. Store product undiluted. No stability data available.

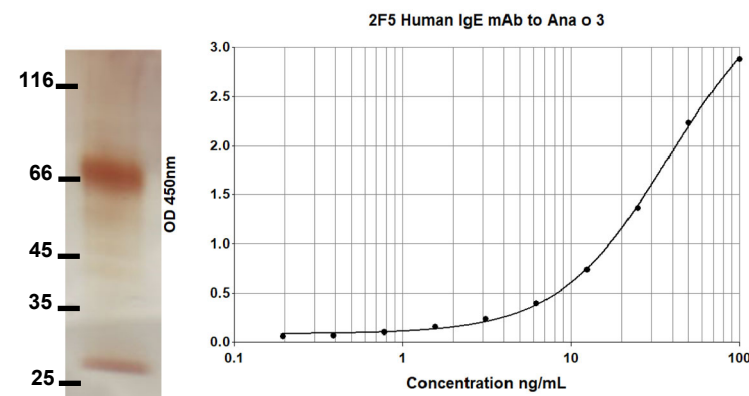
### Applications include:

- QC and validation of purified allergens for molecular diagnostics
- *In vitro* IgE diagnostic tests, calibrators, controls, alternatives to human sera
- Molecular reference standards for IgE
- Epitope analysis and localization of IgE epitopes
- Mast cell/basophil activation assays and histamine release
- Animal models of anaphylaxis

For research or *in vitro* diagnostic use only:  
Not for human *in vivo* or therapeutic use

An InBio® product. Made in the USA

## 2F5 Human IgE mAb to Ana o 3 Purity and Titration Curve



Notes: Purity > 95 % by silver stained SDS-PAGE

### Reference

Wurth, M.A. et al., Human IgE mAbs define variability in commercial *Aspergillus* extract allergen composition, *JCI Insight*. 2018;3 (20):e123387.

Bazaraal, M. and Hamburger, R.N., Standardization and stability of immunoglobulin E, *J Allergy Clin Immunol* 1972; 49:189-191. PMID 4622102.

700 Harris Street · Charlottesville, VA 22903 · US · (434) 984 2304 · mail@inbio.com

Vision Court · Caxton Place · Cardiff, Wales CF238HA · UK · +44 (0) 29 21 674640 · info@inbio.com

www.inbio.com