

Certificate of Analysis

Product:	11B6 anti Gal d 2 Human IgE Monoclonal Ab
Product Code:	E-11B6
Lot Number:	xxxxx
Antibody Clone:	11B6-IgE
Origin:	Monoclonal antibody derived from a patient allergic to egg.
Specificity:	Gal d 2, <i>Gallus domesticus</i> allergen (Ovalbumin)
IgE Concentration:	50,000 IU/mL based on ImmunoCAP using WHO International Standard Immunoglobulin E (IgE), human serum (NIBSC code 11/234).
Quantity:	10,000 IU in 0.2mL (1.0 IU = ~2.4ng IgE)
Formulation:	In phosphate buffered saline, pH 7.4 and 0.05% Tween-20. 0.22µm filtered, preservative free.
Storage/Handling:	Maintain at -20°C for up to 12 months. Avoid repeated freeze-thaw cycles. Store product undiluted. No stability data available.

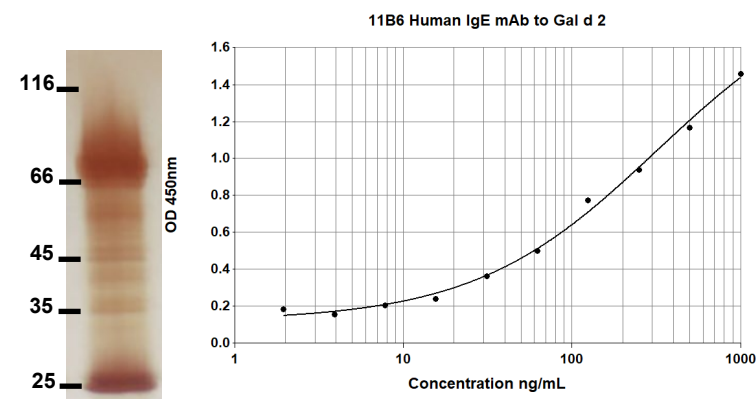
Applications include:

- QC and validation of purified allergens for molecular diagnostics
- *In vitro* IgE diagnostic tests, calibrators, controls, alternatives to human sera
- Molecular reference standards for IgE
- Epitope analysis and localization of IgE epitopes
- Mast cell/basophil activation assays and histamine release
- Animal models of anaphylaxis

For research or *in vitro* diagnostic use only:
Not for human *in vivo* or therapeutic use

An InBio® product. Made in the USA

11B6 Human IgE mAb to Gal d 2 Purity and Titration Curve



Notes: Purity > 95 % by silver stained SDS-PAGE

Reference

Wurth, M.A. et al., Human IgE mAbs define variability in commercial *Aspergillus* extract allergen composition, *JCI Insight*. 2018;3 (20):e123387.

Bazaraal, M. and Hamburger, R.N., Standardization and stability of immunoglobulin E, *J Allergy Clin Immunol* 1972; 49:189-191. PMID 4622102.