

## Certificate of Analysis

<b>Product:</b>	16A8 anti Ara h 2 Human IgE Monoclonal Ab
<b>Product Code:</b>	E-16A8
<b>Lot Number:</b>	XXXXX
<b>Antibody Clone:</b>	16A8-IgE
<b>Origin:</b>	Monoclonal antibody derived from a patient allergic to peanut.
<b>Specificity:</b>	Ara h 2 ( <i>Arachis hypogaea</i> allergen)
<b>Total IgE Concentration:</b>	50,000 IU/mL (+/- 20%) based on ImmunoCAP using WHO International Standard Immunoglobulin E (IgE), human serum (NIBSC code 11/234).
<b>Quantity:</b>	10,000 IU in 0.2mL (1.0 IU = ~2.4ng IgE)
<b>Formulation:</b>	In phosphate buffered saline, pH 7.4 and 0.05% Tween-20. 0.22µm filtered, preservative free.
<b>Storage/Handling:</b>	Maintain at -20°C for up to 12 months. Avoid repeated freeze-thaw cycles. Store product undiluted. No stability data available.

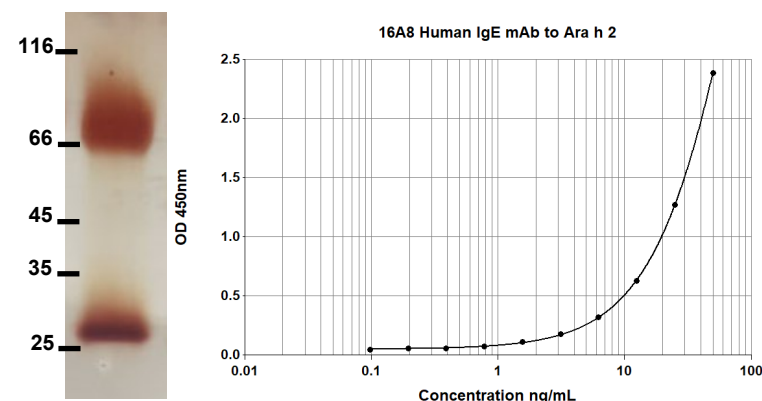
### Applications include:

- QC and validation of purified allergens for molecular diagnostics
- *In vitro* IgE diagnostic tests, calibrators, controls, alternatives to human sera
- Molecular reference standards for IgE
- Epitope analysis and localization of IgE epitopes
- Mast cell/basophil activation assays and histamine release
- Animal models of anaphylaxis

For research or *in vitro* diagnostic use only:  
Not for human *in vivo* or therapeutic use

An InBio® product. Made in the USA

## 16A8 Human IgE mAb to Ara h 2 Purity and Titration Curve



**Notes:** Purity > 95 % by silver stained SDS-PAGE

## Reference

Wurth, M.A. et al., Human IgE mAbs define variability in commercial *Aspergillus* extract allergen composition, *JCI Insight*. 2018;3 (20):e123387.

Bazaraal, M. and Hamburger, R.N., Standardization and stability of immunoglobulin E, *J Allergy Clin Immunol* 1972; 49:189-191. PMID 4622102.

700 Harris Street · Charlottesville, VA 22903 · US · (434) 984 2304 · mail@inbio.com  
Vision Court · Caxton Place · Cardiff, Wales CF238HA · UK · +44 (0) 29 21 674640 · info@inbio.com

www.inbio.com