

## Assay Performance Characteristics:

Standard range: 100-0.19ng/mL  
Limit of Detection: 0.39ng/mL  
Background: OD<0.08 at 450nm  
Coefficient of Determination: R-squared>0.98



## References:

1. Kaul S, et al. Standardization of allergen products: 3. Validation of candidate European Pharmacopoeia standard methods for quantification of major birch allergen Bet v 1. Allergy. 2016; 71:1414.
2. Vieths S, et al. Establishment of recombinant major allergens Bet v 1 and Phl p 5a as Ph. Eur. Reference standards and validation of ELISA methods for their measurement. Results from feasibility studies. Pharmeur Bio Sci Notes. 2012; 2012:118.
3. Himly M, et al. Standardization of allergen products: 1. Detailed characterization of GMP-produced recombinant Bet v 1.0101 as biological reference preparation. Allergy. 2009; 64:1038.



A list of frequently asked questions and troubleshooting guide can be found under the 'Support' tab on our web site: [www.inbio.com](http://www.inbio.com).

[www.inbio.com](http://www.inbio.com)

700 Harris Street  
Charlottesville, VA  
22903  
United States

(434) 984-2304  
[mail@inbio.com](mailto:mail@inbio.com)

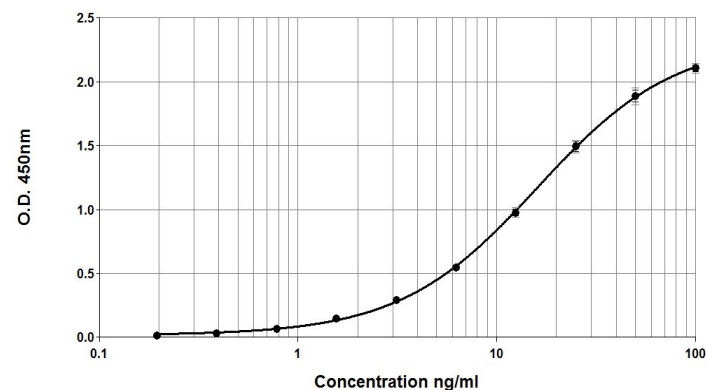
Vision Court  
Caxton Place  
Cardiff, Wales CF23 8HA  
United Kingdom

+44 (0) 29 2167 4640  
[info@inbio.com](mailto:info@inbio.com)

## Bet v 1 ELISA 2.0EP Pre-coated Plate Kit

Product Code: EPC-BV1-EPX  
Lot Number: xxxxx

### Sample curve:



### Contents:

Microtiter plate coated with anti-Bet v 1 monoclonal antibody 5B4  
Bet v 1 allergen standard (white cap)  
Biotinylated monoclonal antibody 6H4 (brown cap)  
Streptavidin-peroxidase IgG (blue cap)  
Wash buffer (10x concentrate)  
Assay buffer (10x concentrate)  
TMB developing substrate  
Stop solution (0.5N sulfuric acid)

Store kit at 2-8°C  
Expiry:

For research and commercial use *in vitro*:  
not for human *in vivo* or therapeutic use.

An InBio® product. Made in the USA.



## Certificate of Analysis

<b>Pre-coated Plate:</b>	96-well polystyrene microtiter plate coated with monoclonal antibody 5B4 and treated with stabilizing agent. Sealed in foil pouch with desiccant.
Monoclonal Antibody:	5B4 (clone 5B4)
Immunogen:	Birch pollen extract
Isotype:	Mouse IgG1
Specificity:	Recognizes distinct epitope on Bet v 1. Minimal cross-reactivity with PR-10 family of pollen allergens.
Purification:	Produced in tissue culture and purified by affinity chromatography using Protein A. Single heavy and light chain bands on SDS-PAGE.
Lot Number:	xxxxx

<b>Detection Antibody:</b>	6H4 (clone 6H4)
Immunogen:	Birch pollen extract
Isotype:	Mouse IgG1
Specificity:	Recognizes distinct epitope on Bet v 1. Minimal cross-reactivity with PR-10 family of pollen allergens.
Purification:	Produced in tissue culture and purified by affinity chromatography using Protein A. Single heavy and light chain bands on SDS-PAGE.
Biotinylation:	Biotinylated and titrated for use in ELISA at 1:1,000 dilution. Prepared in 1% BSA/50% glycerol/PBS, pH 7.4, 0.22µm filtered, preservative free.
Lot Number:	xxxxx

**Allergen Standard:** Purified recombinant Bet v 1 prepared in 1% BSA/50% glycerol/PBS, pH 7.4. Substandardized against the European Pharmacopoeia rBet v 1 CRS, Y0001565.

Concentration: 1,000 ng/mL  
Lot Number: xxxxx

## Materials required, but not provided:

- Type I ultrapure water or 18.2MΩ de-ionized water
- Volumetric measuring equipment (e.g. serological pipettes, graduated cylinders)
- Clean containers for buffer and reagent preparation
- Reagent reservoirs
- Calibrated single and multi-channel micropipettes and tips
- Vortex mixer
- Plate reader capable of reading absorbance at 450nm
- Analysis software (recommended, but not required)

## Data Processing:

4-parameter logistic curve fit (x-axis plotted on log scale)

## Protocol

### Please read the entire protocol before starting the assay

*Bring all reagents to room temperature before use*

1. Prepare a 1x dilution of wash and assay buffers from the 10x concentrates in clean containers using 18.2MΩ de-ionized water or Type I ultrapure water.  
For one plate:  
**Wash buffer:** add 15mL concentrate to 135mL water (150mL total volume)  
**Assay buffer:** add 3mL concentrate to 27mL water (30mL total volume)  
Adjust volumes accordingly for multi-plate assays. Diluted buffers may be stored at 4°C for up to 1 week.  
  
**The example below is for testing 6 samples starting at 1/10 dilution.** A multichannel pipet is recommended for mixing and transferring between wells.
  - *Highly concentrated samples will require pre-dilution before adding to the plate.*
2. Remove the plate from the foil pouch. Add 150µL wash buffer to each well. Empty the wells by inverting the plate and then tap on absorbent paper to remove residual buffer. Repeat the wash cycle two times.  
\*Move directly to the next step to prevent the wells from drying.
3. Add 100µL assay buffer to all wells. Add an additional 80µL of assay buffer to wells A1-H1 (the total volume of assay buffer in these wells will be 180µL; all other wells will have 100µL).
4. **Standard:** gently vortex the standard and add 20µL to wells A1 and B1. Mix by pipetting up and down 8-10 times, and then transfer 100µL into wells A2 and B2. Mix and continue the doubling dilution scheme across the plate to wells A10 and B10. Remove and discard 100µL from wells A10 and B10 (100µL will remain).  
The assay buffer in wells A11, B11 and A12, B12 will serve as **Blanks**.  
**Samples:** add 20µL of sample to wells C1-H1. Mix by pipetting up and down 8-10 times. Transfer 100µL to wells C2-H2. Continue mixing and transferring to column 12. Remove and discard 100µL from wells C12-H12 (100µL will remain). When finished preparing the plate, the final volume in all wells should be 100µL.
5. Cover the plate and incubate for 1 hour ± 10 minutes at room temperature (20-25°C) away from direct sunlight. **Note:** gentle agitation on a plate shaker during incubations may reduce variability.
6. Gently vortex the biotinylated detection antibody and streptavidin-peroxidase. Prepare a 1:1,000 dilution mix by adding 11µL biotinylated detection antibody and 11µL streptavidin-peroxidase together in 11mL assay buffer in a reagent reservoir.  
**Mix thoroughly.** Wash the plate 3x with 150µL wash buffer per well. Add 100µL of the detection antibody/streptavidin-peroxidase mix to each well.
7. Incubate the plate for 1 hour ± 10 minutes at room temperature (20-25°C) away from direct sunlight.
8. Pour the TMB substrate and stop solution into separate reagent reservoirs so they are ready to use in Step 9. Wash the plate 3x with 150µL wash buffer per well.
9. Use a **multi-channel** pipette to add 100µL TMB to each well and monitor the reaction as the blue color develops. Once OD450 reaches 0.08-0.09 for Standard 1, use a **multi-channel** pipette to add 50µL stop solution to each well (the color will change to yellow).